

The image shows the front cover of a book. The cover is decorated with a marbled pattern in shades of blue, green, and white. A central orange label is affixed to the cover, containing handwritten Japanese text in black ink. The text is written vertically and reads '古今古今' (Kokin Kokin) followed by '上' (Ue) at the bottom. The book is set against a dark, almost black background.

古今古今  
上

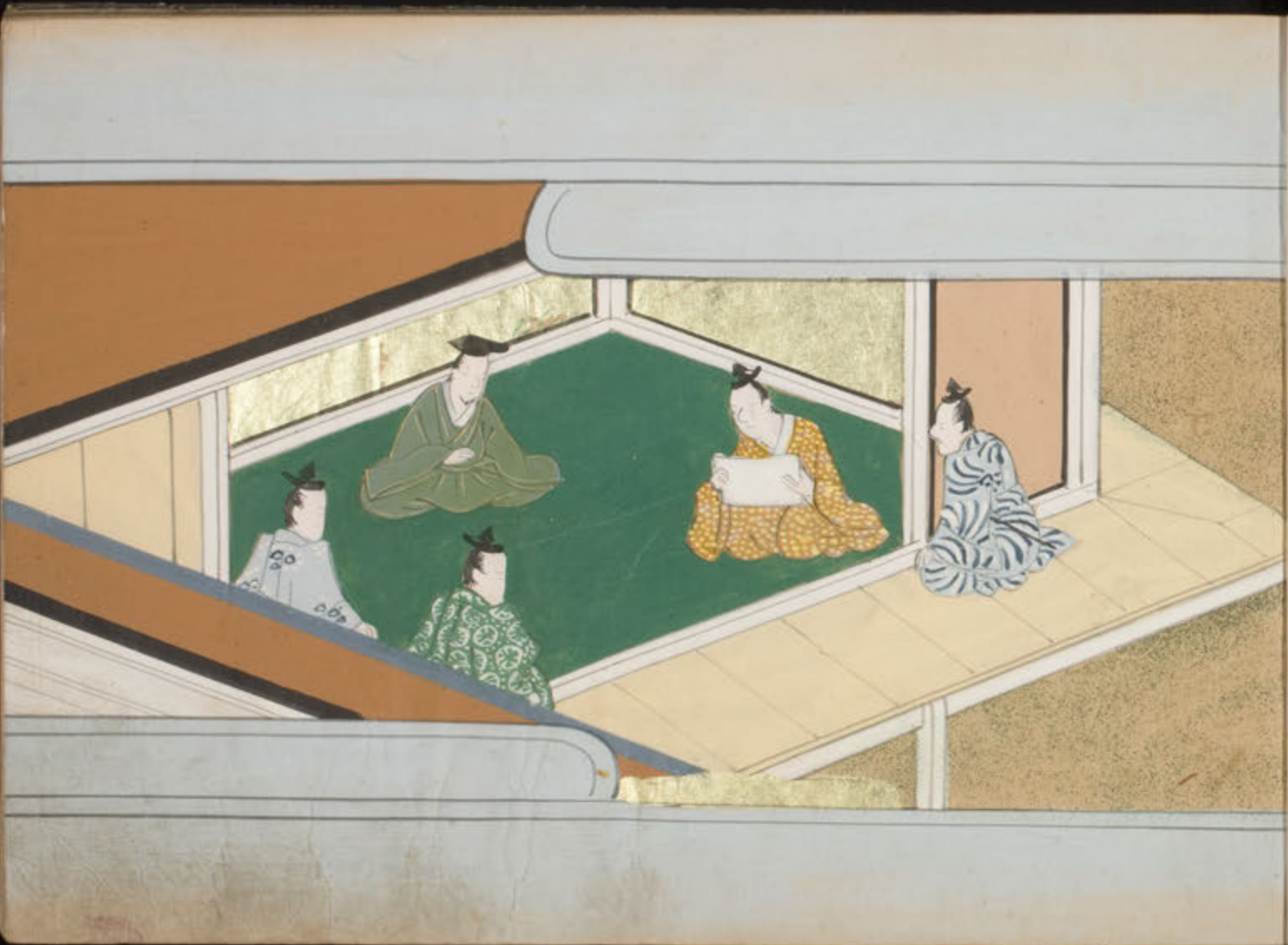






一  
二  
三  
四  
五  
六  
七  
八  
九  
十  
十一  
十二  
十三  
十四  
十五  
十六  
十七  
十八  
十九  
二十  
二十一  
二十二  
二十三  
二十四  
二十五  
二十六  
二十七  
二十八  
二十九  
三十  
三十一  
三十二  
三十三  
三十四  
三十五  
三十六  
三十七  
三十八  
三十九  
四十  
四十一  
四十二  
四十三  
四十四  
四十五  
四十六  
四十七  
四十八  
四十九  
五十  
五十一  
五十二  
五十三  
五十四  
五十五  
五十六  
五十七  
五十八  
五十九  
六十  
六十一  
六十二  
六十三  
六十四  
六十五  
六十六  
六十七  
六十八  
六十九  
七十  
七十一  
七十二  
七十三  
七十四  
七十五  
七十六  
七十七  
七十八  
七十九  
八十  
八十一  
八十二  
八十三  
八十四  
八十五  
八十六  
八十七  
八十八  
八十九  
九十  
九十一  
九十二  
九十三  
九十四  
九十五  
九十六  
九十七  
九十八  
九十九  
一百

一



Handwritten text in a cursive script, likely a personal letter or diary entry. The text is written in a fluid, connected style across approximately 15 lines. The ink is dark, and the paper shows signs of age and wear, including a prominent red stain near the bottom left.

Handwritten text in a cursive script, continuing from the previous page. The text is written in a fluid, connected style across approximately 15 lines. The ink is dark, and the paper shows signs of age and wear.



Handwritten text in Arabic script, consisting of approximately 14 lines of cursive script.

Handwritten text in Arabic script, consisting of approximately 14 lines of cursive script.

Handwritten text in a cursive script, likely a personal letter or a list of names. The text is written in a fluid, connected style across approximately 12 lines.

Handwritten text in a cursive script, continuing from the previous page. The text is written in a fluid, connected style across approximately 12 lines.



こゝろをたふししこと  
 あひ路のまのたかのま  
 ゑふさのまのまのま  
 りまのまのまのまの  
 まのまのまのまのま  
 まのまのまのまのま  
 まのまのまのまのま  
 まのまのまのまのま  
 まのまのまのまのま  
 まのまのまのまのま



Handwritten text in Arabic script, consisting of approximately 14 lines of cursive script.

Handwritten text in Arabic script, consisting of approximately 14 lines of cursive script.



Handwritten text in Arabic script, consisting of approximately 14 lines of cursive script.

Handwritten text in Arabic script, consisting of approximately 4 lines of cursive script.

Handwritten text in Arabic script, consisting of approximately 1 line of cursive script.

Handwritten text in Arabic script, consisting of approximately 1 line of cursive script.

Handwritten text in Arabic script, consisting of approximately 1 line of cursive script.

Handwritten text in Arabic script, consisting of approximately 1 line of cursive script.





Handwritten text in cursive script, likely a list or account, written on the left page of an open manuscript. The text is arranged in approximately 12 horizontal lines, starting from the top left and moving downwards. The script is highly stylized and characteristic of 17th-century English cursive.

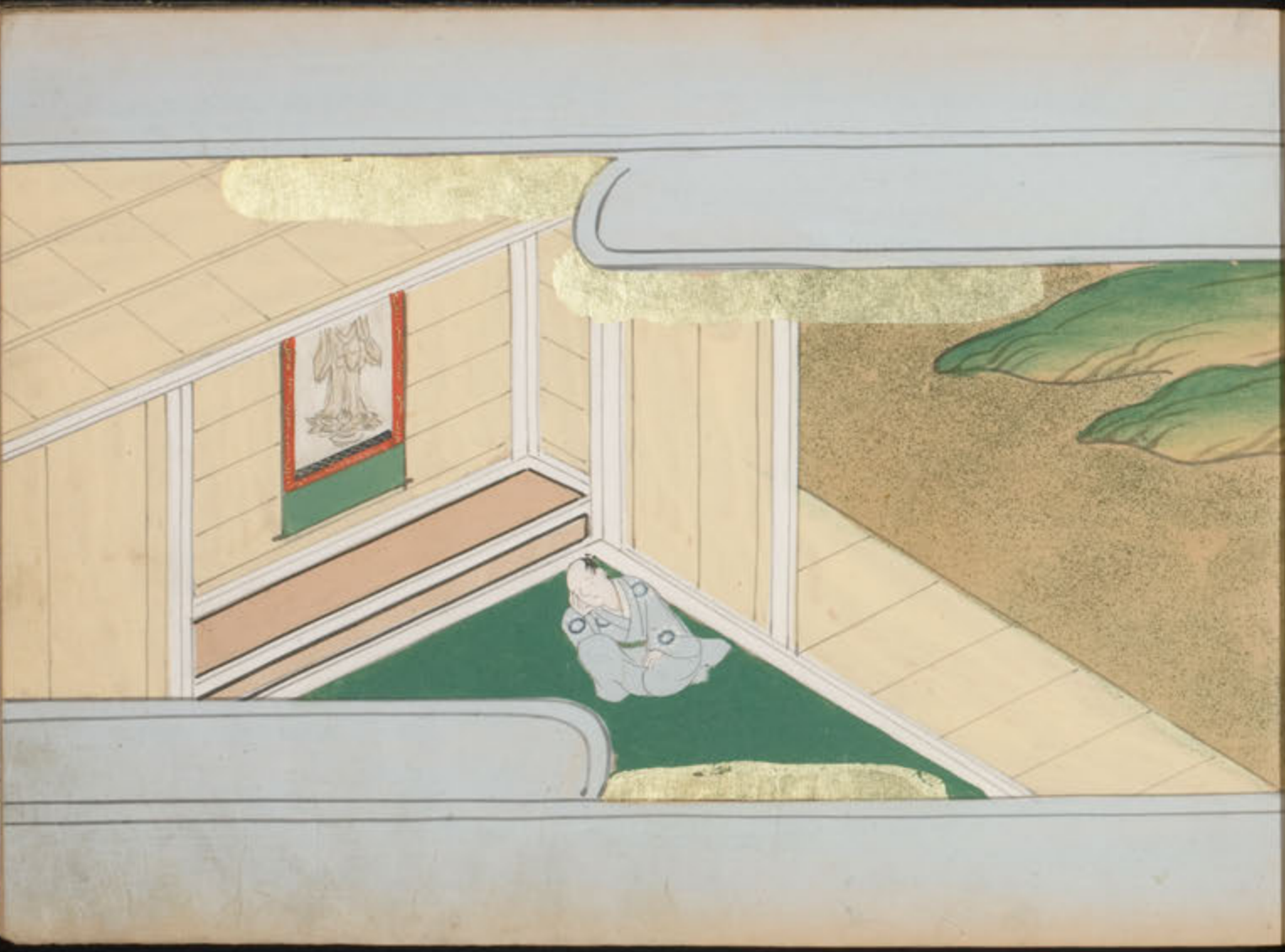
Handwritten text in cursive script, likely a list or account, written on the right page of an open manuscript. The text is arranged in approximately 12 horizontal lines, starting from the top left of the page and moving downwards. The script is highly stylized and characteristic of 17th-century English cursive.

Handwritten text in a cursive script, likely a form of shorthand or a specific dialect. The text is arranged in approximately 12 horizontal lines across the page.

Handwritten text in a cursive script, likely a form of shorthand or a specific dialect. The text is arranged in approximately 12 horizontal lines across the page.



たしとせむとすくはる  
るるるるるるるるる  
るるるるるるるるる  
るるるるるるるるる  
るるるるるるるるる  
るるるるるるるるる  
るるるるるるるるる  
るるるるるるるるる  
るるるるるるるるる  
るるるるるるるるる



Handwritten text in a cursive script, likely a form of shorthand or a specific dialect. The text is arranged in approximately 12 horizontal lines across the page.

Handwritten text in a cursive script, likely a form of shorthand or a specific dialect. The text is arranged in approximately 12 horizontal lines across the page.



Handwritten text in a cursive script, likely a personal letter or diary entry. The text is written in a fluid, connected style across approximately 15 lines. The characters are dark and the ink shows some bleed-through from the reverse side of the page.

Handwritten text in a cursive script, continuing from the previous page. The text is written in a fluid, connected style across approximately 15 lines. The characters are dark and the ink shows some bleed-through from the reverse side of the page.

ワ  
リ  
ハ



心  
〜  
道

三  
〜  
リ





Handwritten text at the top of the left page.

Main body of handwritten text on the left page, consisting of approximately 12 lines of cursive script.

Main body of handwritten text on the right page, consisting of approximately 12 lines of cursive script.







110X  
226  
2