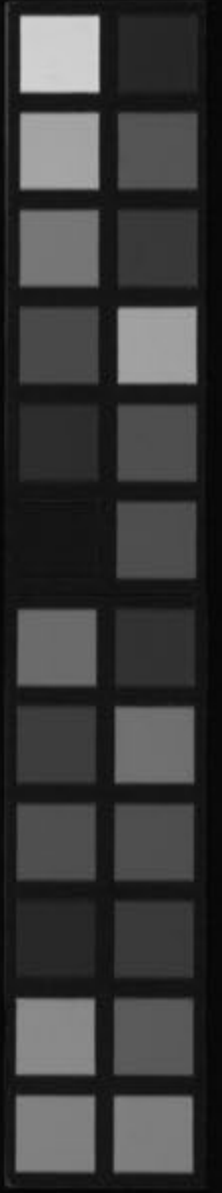
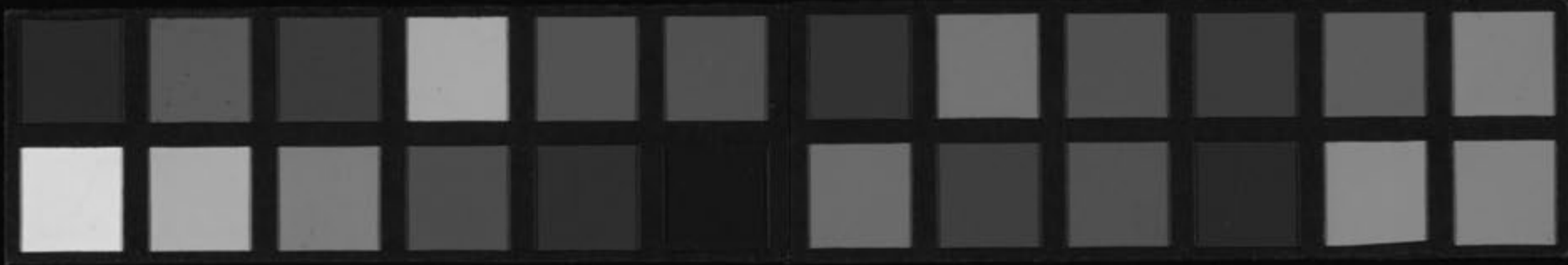


水野采女書狀
奈須家資料
四二

Kitasato Memorial Medical Library





右名母新

右名母新

御故拙者

可百

御故拙者

御故拙者



Handwritten text in cursive Japanese calligraphy (sōsho) on aged paper. The text is arranged in vertical columns, starting from the top left and moving downwards. The characters are dark and somewhat faded, with some ink bleed-through visible from the reverse side of the page. The paper shows signs of age, including foxing and some staining.

Kitasato Memorial Medical Library

