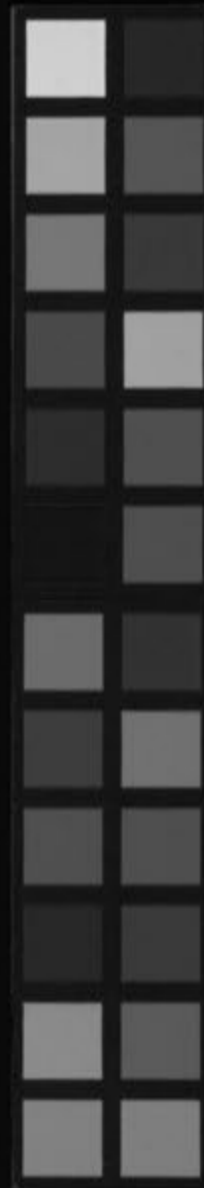


御達狀斷片

茶須家資料  
六三

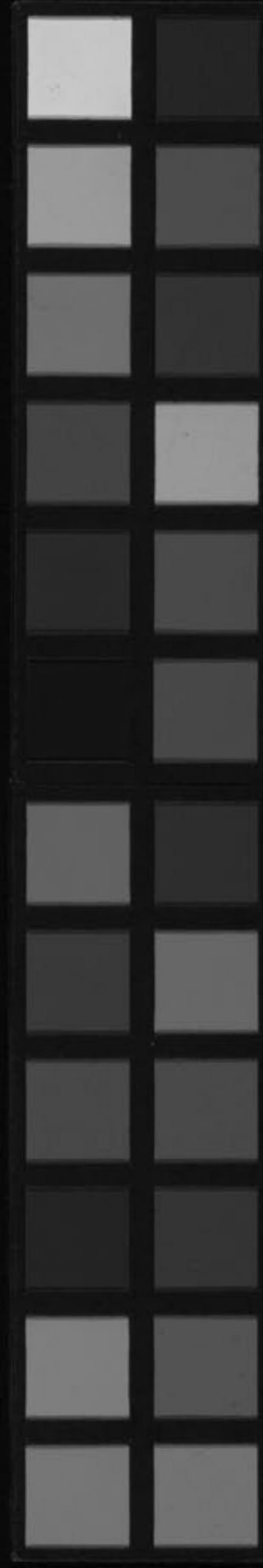


新  
通  
河  
須  
谷  
氏  
藏  
書  
印



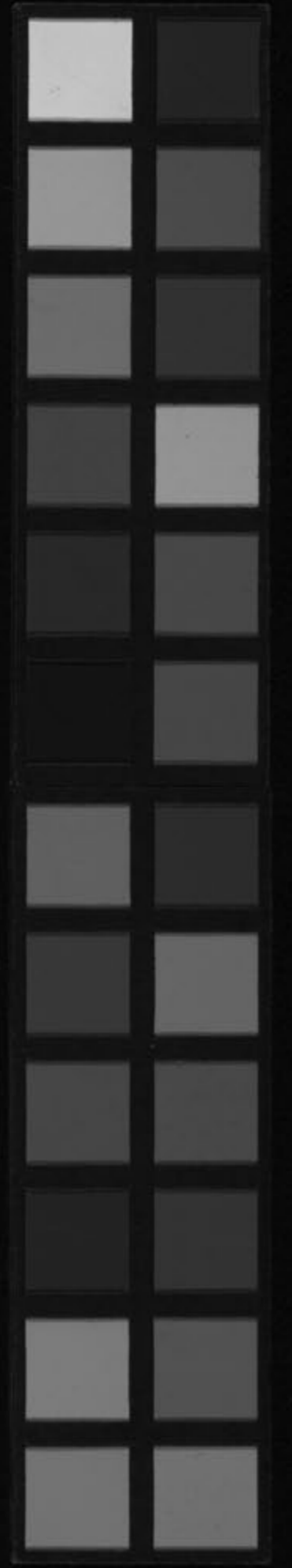
F  
ナ-80

Kitasato Memorial Medical Library



Handwritten Japanese calligraphy in cursive style (sōsho), consisting of four vertical columns of text. The characters are highly stylized and difficult to decipher precisely, but they appear to be a personal note or signature. The paper is aged and shows signs of wear, including tears and discoloration.

Kitasato Memorial Medical Library



490,289  
N2-68

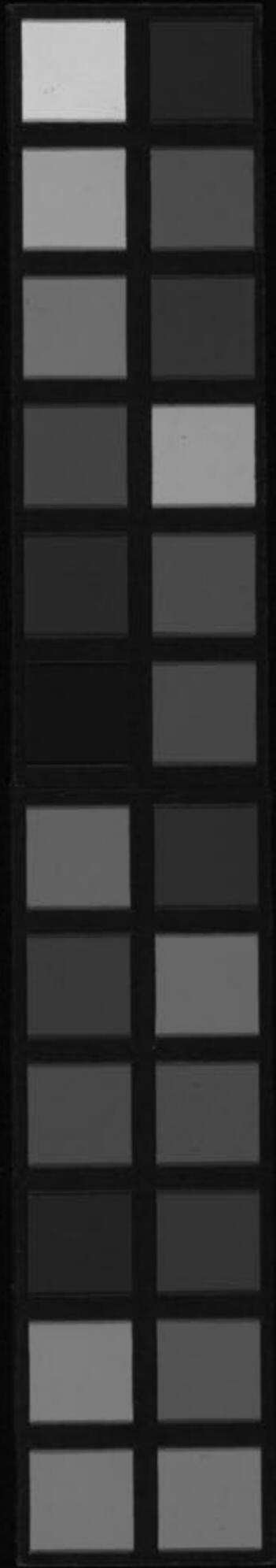
No. 4969



京波堂行

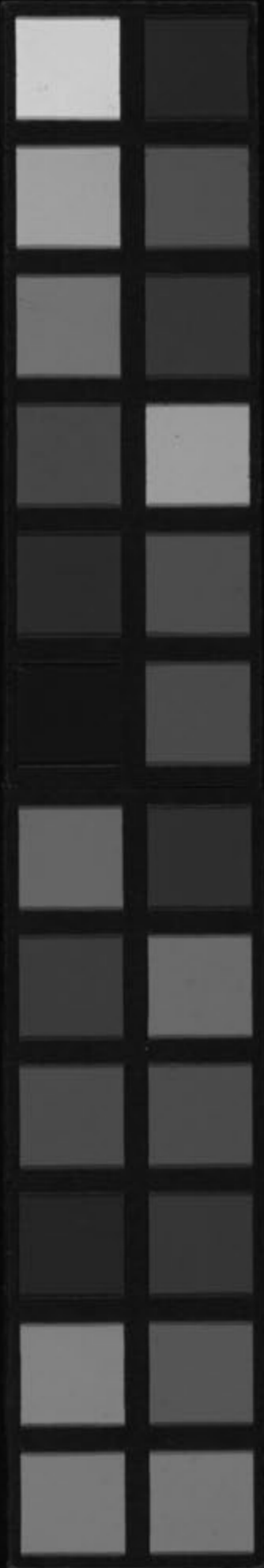
富士川文庫  
423

Kitasato Memorial Medical Library



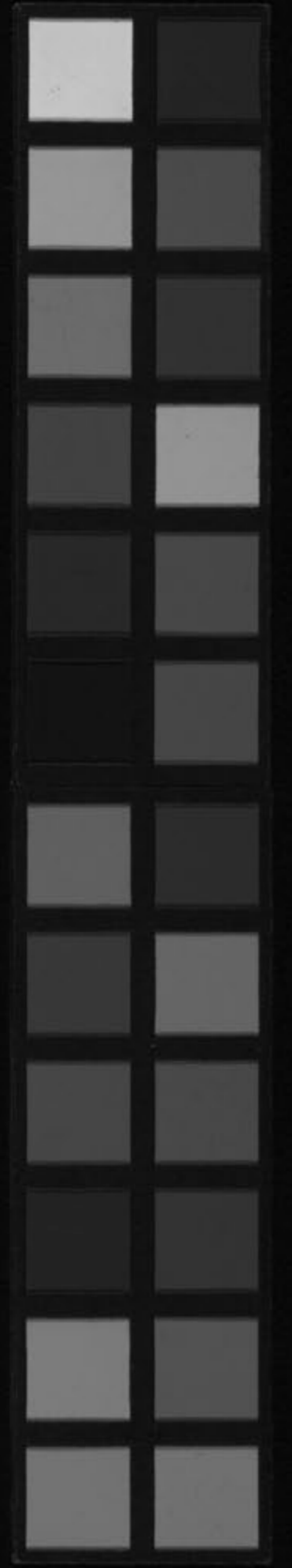
奈波香竹

Kitasato Memorial Medical Library



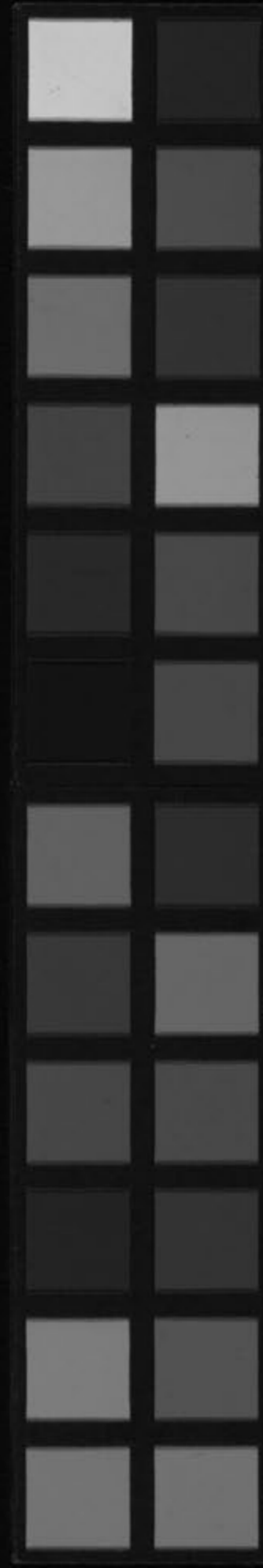
張子校

Kitasato Memorial Medical Library



海軍板

Kitasato Memorial Medical Library



紙子校

Kitasato Memorial Medical Library

