





Handwritten text in a cursive script, likely a historical document or manuscript. The text is written in a dark ink on aged, slightly yellowed paper. It consists of approximately 25 lines of text, densely packed and filling most of the page. The script is highly stylized and difficult to decipher without specialized knowledge of the language or dialect used. The text appears to be a continuous narrative or record, possibly related to a legal or administrative matter, given the formal nature of the handwriting and the structure of the lines. There are some faint markings and variations in ink density throughout the document, suggesting it may be a reproduction or a well-used original.

Handwritten text in a cursive script, likely a historical document or manuscript. The text is written in a dense, flowing style across multiple lines on both pages. The ink is dark, and the paper shows signs of age and wear. The script is highly stylized and difficult to decipher without specialized knowledge of the language or dialect used.



わうせう時



わうせう時

わうせう時

打寄方より往りてしる事なる所にては...  
しる事なる所にては...  
しる事なる所にては...  
しる事なる所にては...  
しる事なる所にては...  
しる事なる所にては...  
しる事なる所にては...  
しる事なる所にては...  
しる事なる所にては...  
しる事なる所にては...

第二

いふ事なる所にては

いふ事なる所にては...  
いふ事なる所にては...  
いふ事なる所にては...  
いふ事なる所にては...  
いふ事なる所にては...  
いふ事なる所にては...  
いふ事なる所にては...  
いふ事なる所にては...  
いふ事なる所にては...  
いふ事なる所にては...

いふ事なる所にては...  
いふ事なる所にては...  
いふ事なる所にては...  
いふ事なる所にては...  
いふ事なる所にては...  
いふ事なる所にては...  
いふ事なる所にては...  
いふ事なる所にては...  
いふ事なる所にては...  
いふ事なる所にては...







三つ平六

三



三つ平六

三

Handwritten text in a cursive script, likely a historical document or manuscript. The text is densely packed and covers most of the page.

# Handwritten title or section header in a large, bold script.

Small handwritten text or mark above the main title.

Handwritten text in a cursive script, continuing from the previous page or as a separate section. The text is densely packed and covers most of the page.



Handwritten text in a cursive script, likely a historical document or manuscript. The text is written in a dark ink on aged, yellowed paper. It consists of approximately 25 lines of text, densely packed and filling most of the page. The script is highly stylized and difficult to decipher without specialized knowledge of the language or dialect. The text appears to be a continuous narrative or record, possibly related to a legal or administrative matter, given the formal nature of the handwriting and the presence of some larger, possibly initial letters or section markers. The paper shows signs of wear, including some staining and discoloration, particularly towards the edges.

Handwritten text in a cursive script, likely a historical document or manuscript. The text is written in a dark ink on aged, slightly yellowed paper. It appears to be a continuous paragraph of text, possibly a letter or a record.

中四

Handwritten text in a cursive script, continuing from the previous page. The text is dense and fills most of the page. It appears to be a continuation of the same document or a separate entry. The script is consistent with the text on the adjacent page.



ゆきしん

ゆきしん

ゆきしん



月見のついで

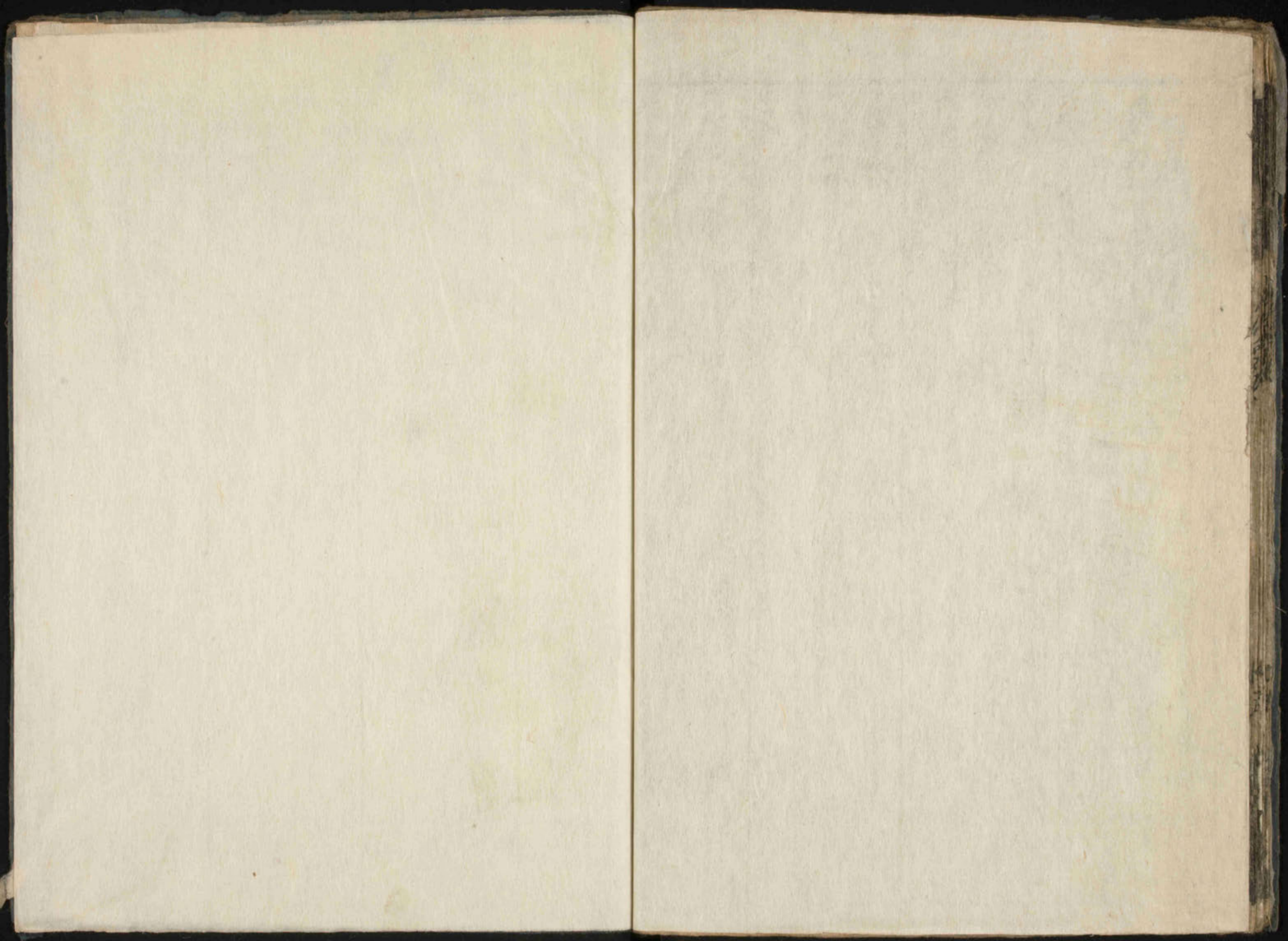
14  
5

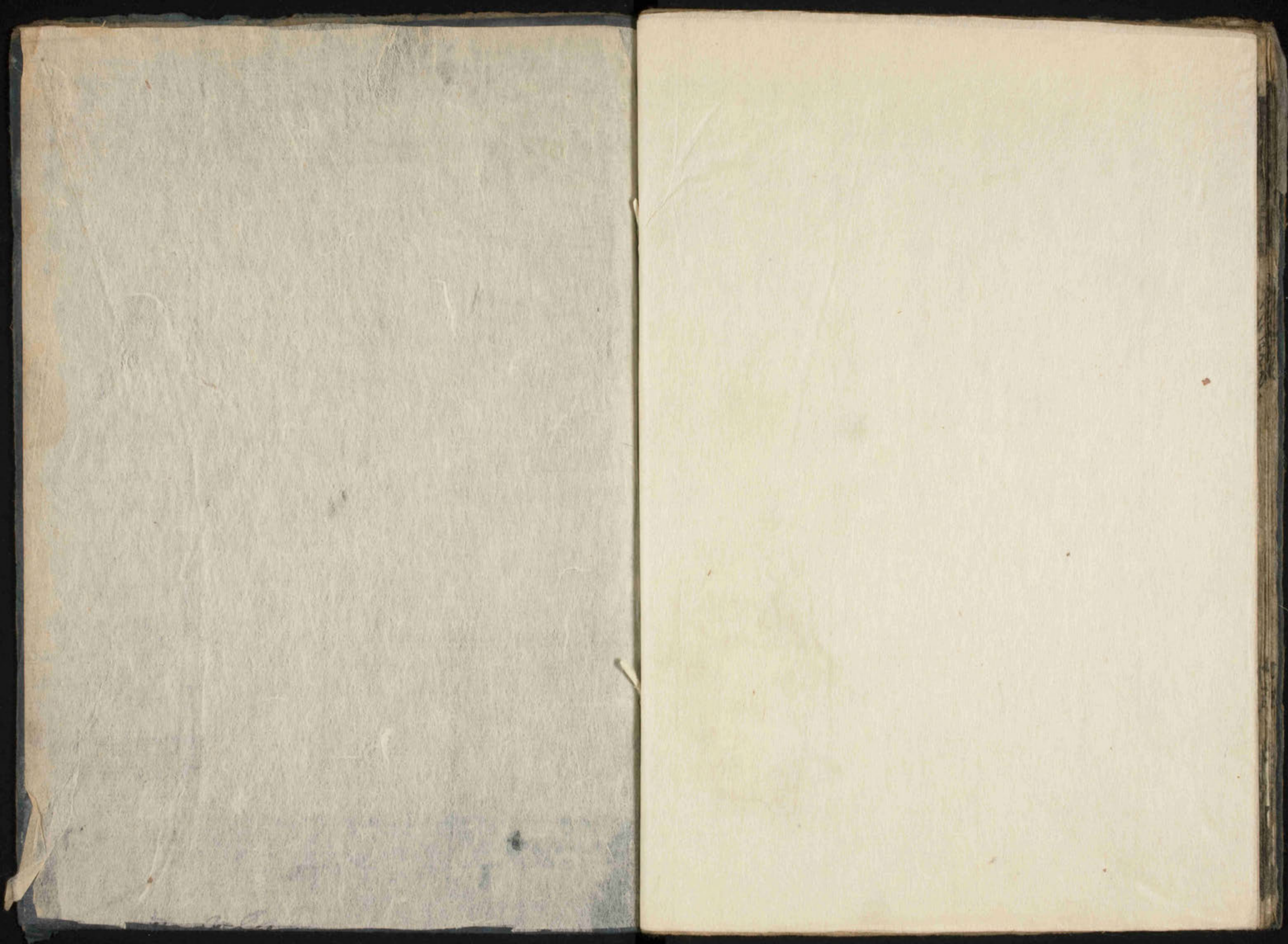


Handwritten text in a cursive script, likely a historical document or manuscript. The text is written in a dark ink on aged, slightly yellowed paper. It consists of approximately 15 lines of text, starting from the top right and moving downwards. The script is dense and characteristic of early modern European handwriting.

Handwritten text in a cursive script, similar to the right page. It also consists of approximately 15 lines of text. A prominent feature is a large, bold, rectangular box containing the characters "中" (middle) and "文" (text), which likely serves as a section header or a marker for a specific part of the document. The text is written in a dark ink on aged paper.







110X  
195  
1