

110X
284
1



横山家藏

Handwritten text in a cursive script, likely a letter or document, written on aged, stained paper. The text is arranged in approximately 10 horizontal lines across the left page of the open book. The characters are dark and fluid, characteristic of a historical cursive style. The right page is mostly blank with some faint, illegible markings.

Handwritten text in a cursive script, likely a historical document or letter, spanning two pages. The text is written in a dark ink on aged, yellowish paper. The script is highly stylized and difficult to decipher, but appears to be a form of cursive used in the 17th or 18th century. The text is arranged in approximately 15 lines across the two pages, with a clear vertical crease separating the left and right sides. The ink shows some fading and bleed-through from the reverse side of the paper.

Handwritten text in a cursive script, likely a personal letter or a short story. The text is written in a fluid, connected style across approximately 10 lines.

Handwritten text in a cursive script, continuing from the previous page. The text is written in a fluid, connected style across approximately 10 lines.

Handwritten text in a cursive script, likely a letter or document, spanning the left page. The text is written in a fluid, connected style with varying line heights and slants.

Handwritten text in a cursive script, likely a letter or document, spanning the right page. The text continues from the left page, maintaining the same fluid, connected style.

Handwritten text in Arabic script, consisting of approximately 10 lines of cursive writing.

Handwritten text in Arabic script, consisting of approximately 10 lines of cursive writing.

Handwritten text in Arabic script, consisting of approximately 10 lines of cursive script.

Handwritten text in Arabic script, consisting of approximately 10 lines of cursive script, continuing from the previous page.

Handwritten text in Arabic script, consisting of approximately 10 lines of cursive script.

Handwritten text in Arabic script, consisting of approximately 10 lines of cursive script.

Handwritten text in Arabic script, consisting of approximately 10 lines of cursive script.

Handwritten text in Arabic script, consisting of approximately 10 lines of cursive script.

Handwritten text in a cursive script, likely a letter or document, spanning the right page of the manuscript. The text is written in a fluid, connected style.

Handwritten text in a cursive script, likely a signature or a specific phrase, located in the middle of the right page.

Handwritten text in a cursive script, likely a signature or a specific phrase, located below the main text on the right page.

Handwritten text in a cursive script, likely a signature or a specific phrase, located below the main text on the right page.

Handwritten text in a cursive script, likely a signature or a specific phrase, located in the middle of the left page.

Handwritten text in a cursive script, likely a signature or a specific phrase, located below the main text on the left page.

Handwritten text in a cursive script, likely a signature or a specific phrase, located at the bottom of the left page.

Handwritten text in a cursive script, likely a letter or document, spanning the left page of the manuscript. The text is written in a fluid, connected style with various flourishes and ascenders.

Handwritten text in a cursive script, likely a signature or a specific section of the document, located in the center of the manuscript. It features a prominent initial and a long, sweeping tail.

Handwritten text in a cursive script, likely a signature or a specific section of the document, located on the right side of the manuscript. It is written in a similar style to the other text on the page.

Handwritten text in a cursive script, likely a signature or a specific section of the document, located on the right side of the manuscript. It is written in a similar style to the other text on the page.

Handwritten text in a cursive script, likely a signature or a specific section of the document, located on the right side of the manuscript. It is written in a similar style to the other text on the page.

Handwritten text in a cursive script, likely a historical document or manuscript, spanning two pages. The text is written in a dark ink on aged, yellowish paper. The script is highly stylized and difficult to decipher, but appears to be a form of early modern European cursive. The text is arranged in approximately 15 lines per page, with some lines starting with a large initial letter. The overall appearance is that of a personal letter or a private record.

Handwritten text in Arabic script, consisting of two lines.

Handwritten text in Arabic script, consisting of three lines.

Handwritten text in Arabic script, consisting of two lines.

Handwritten text in Arabic script, consisting of seven lines.

Handwritten text in a cursive script, likely a letter or document. The text is written in a dark ink on aged paper. The script is highly stylized and difficult to decipher. The text is arranged in approximately 10 lines, starting from the top left and moving downwards. The first line begins with a large, decorative initial letter. The text appears to be a personal or official communication, possibly a letter or a document. The handwriting is consistent throughout the page, suggesting a single scribe. The paper shows signs of age, including some discoloration and wear at the edges.

Handwritten text in a cursive script, likely a letter or document. The text is written in a dark ink on aged paper. The script is highly stylized and difficult to decipher. The text is arranged in approximately 10 lines, starting from the top left and moving downwards. The first line begins with a large, decorative initial letter. The text appears to be a personal or official communication, possibly a letter or a document. The handwriting is consistent throughout the page, suggesting a single scribe. The paper shows signs of age, including some discoloration and wear at the edges.

Handwritten text in a cursive script, likely a letter or document, spanning two pages. The text is written in a fluid, connected style. The right page contains approximately 12 lines of text, and the left page contains approximately 12 lines of text. The ink is dark, and the paper shows signs of age and wear.

Peri-Inde-Pharm-ferme
in-otum-er

Wm. Carter, Jr. & Co. Boston
Mass.

London
1850

Peri-Inde-Pharm-ferme

in-otum-er

Wm. Carter, Jr. & Co.
Boston

London
1850

Peri-Inde-Pharm-ferme
in-otum-er

Handwritten text in a cursive script, likely a historical document or letter, spanning two pages. The text is written in a dark ink on aged, yellowish paper. The script is highly stylized and appears to be a form of shorthand or a specific dialect. The text is arranged in approximately 15 lines across the two pages, with a clear vertical crease separating the left and right sides. The handwriting is consistent throughout, suggesting a single scribe. The overall appearance is that of a well-preserved but aged manuscript.

Handwritten text in a cursive script, likely a letter or document, covering the left page of the spread.

Handwritten text in a cursive script, likely a letter or document, covering the right page of the spread.

Handwritten text in Arabic script, consisting of approximately 15 lines of text on each page. The script is a cursive style, likely Maghrebi or Ottoman, and is written in dark ink on aged, yellowish paper. The text is arranged in a single column on each page, with some lines starting with a small red or blue mark. The handwriting is fluid and consistent throughout the document.

Handwritten text in a cursive script, likely a historical document or manuscript. The text is arranged in approximately 15 horizontal lines across the page. The script is dense and characteristic of early modern European handwriting.

Handwritten text in a cursive script, likely a letter or document, covering the left page of the manuscript. The text is written in a fluid, connected style with various flourishes and loops.

Handwritten text in a cursive script, continuing from the left page, covering the right page of the manuscript. The text is written in a fluid, connected style with various flourishes and loops.

Handwritten text in a cursive script, likely a historical document or letter. The text is written in a dark ink on aged paper. It consists of approximately 12 lines of text, with some lines starting with a small blue mark. The script is highly stylized and difficult to decipher without a key.

Handwritten text in a cursive script, likely a historical document or letter. The text is written in a dark ink on aged paper. It consists of approximately 12 lines of text, with some lines starting with a small blue mark. The script is highly stylized and difficult to decipher without a key.

Handwritten text in a cursive script, likely Persian or Urdu, spanning the left page of the manuscript. The text is written in dark ink on aged, yellowish paper. It consists of approximately 12 lines of text, starting with a large initial letter 'س' (S) and ending with a long horizontal flourish.

Handwritten text in a cursive script, likely Persian or Urdu, spanning the right page of the manuscript. The text is written in dark ink on aged, yellowish paper. It consists of approximately 12 lines of text, starting with a large initial letter 'س' (S) and ending with a long horizontal flourish.

Handwritten text in Arabic script, consisting of approximately 15 lines of cursive script across two pages. The text is written in dark ink on aged, yellowish paper. The script is dense and continuous across the lines, with some variations in line length and spacing. The right page contains about 10 lines, and the left page contains about 5 lines. The overall appearance is that of a historical manuscript or a collection of handwritten notes.

Handwritten text in a cursive script, likely a personal letter or diary entry, spanning the left page of the manuscript.

Handwritten text in a cursive script, continuing from the left page, spanning the right page of the manuscript.

Handwritten text in a cursive script, likely a letter or document, spanning the left page of the open book. The text is written in a fluid, connected style with varying line heights and slants.

Handwritten text in a cursive script, continuing from the left page or as a separate entry, spanning the right page of the open book. The script is consistent with the left page, showing a high degree of fluidity and connectivity between letters.

Handwritten text in Arabic script, consisting of approximately 15 lines of text on each page. The script is cursive and appears to be a form of Arabic calligraphy, possibly Maghrebi or Ottoman style. The text is written in dark ink on aged, yellowish paper. The lines are roughly horizontal but show some waviness and irregular spacing, characteristic of handwritten manuscripts. The right page contains a small, illegible mark or stamp near the top center.

Handwritten text in a cursive script, likely Persian or Urdu, consisting of approximately 12 lines of text.

Handwritten text in a cursive script, likely Persian or Urdu, consisting of approximately 12 lines of text.

Handwritten text in Arabic script, likely a religious or philosophical treatise. The text is written in a cursive style and spans the width of the page. It begins with a large initial letter, possibly 'ب' (Ba), and continues with several lines of text. The script is dense and characteristic of the Maghrebi or Andalusian style.

Handwritten text in Arabic script, continuing the text from the previous page. It is written in a cursive style and spans the width of the page. The text is dense and characteristic of the Maghrebi or Andalusian style. It begins with a large initial letter, possibly 'ب' (Ba), and continues with several lines of text. The script is dense and characteristic of the Maghrebi or Andalusian style.

Handwritten text in Arabic script, likely a list or account, written on the left page of an open manuscript. The text is arranged in approximately 12 horizontal lines, starting from the top right and moving towards the bottom left. The script is cursive and appears to be from a historical document.

Handwritten text in Arabic script, likely a list or account, written on the right page of an open manuscript. The text is arranged in approximately 12 horizontal lines, starting from the top right and moving towards the bottom left. The script is cursive and appears to be from a historical document.

Handwritten text in Arabic script, consisting of approximately 15 lines of cursive script. The text is written on aged, yellowed paper and is oriented vertically on the page. The script is dense and characteristic of classical Arabic calligraphy.

Handwritten text in Arabic script, consisting of approximately 18 lines of cursive script across two pages. The text is written in dark ink on aged, yellowish paper. The script is highly stylized and characteristic of the Maghrebi or Andalusian style. The lines are closely spaced and flow across the width of the pages. The right page shows a clear margin on the right side, while the left page is more filled with text. The overall appearance is that of a historical manuscript or a collection of poetry or prose.

Handwritten text in Arabic script, consisting of approximately 10 lines of cursive script.

Handwritten text in Arabic script, consisting of approximately 10 lines of cursive script.

Handwritten text in a cursive script, likely a letter or document. The text is written in a fluid, connected style across approximately 10 lines. The ink is dark and the paper shows signs of age and wear.

Handwritten text in a cursive script, likely a letter or document. The text is written in a fluid, connected style across approximately 10 lines. The ink is dark and the paper shows signs of age and wear.

Handwritten text in Arabic script, likely a religious or philosophical treatise. The text is written in a cursive style and spans the width of the page.

Handwritten text in Arabic script, continuing the text from the previous page. The text is written in a cursive style and spans the width of the page.

Handwritten text in a cursive script, likely a letter or document, written on the left page of an open manuscript. The text is dense and fills most of the page.

Handwritten text in a cursive script, likely a letter or document, written on the right page of an open manuscript. The text is dense and fills most of the page.

Handwritten text in Arabic script, consisting of approximately 10 lines of cursive script.

Handwritten text in Arabic script, consisting of approximately 10 lines of cursive script.

Handwritten text in cursive script, likely a letter or document, starting with a large initial character.

Handwritten text in cursive script, appearing as a separate line or section.

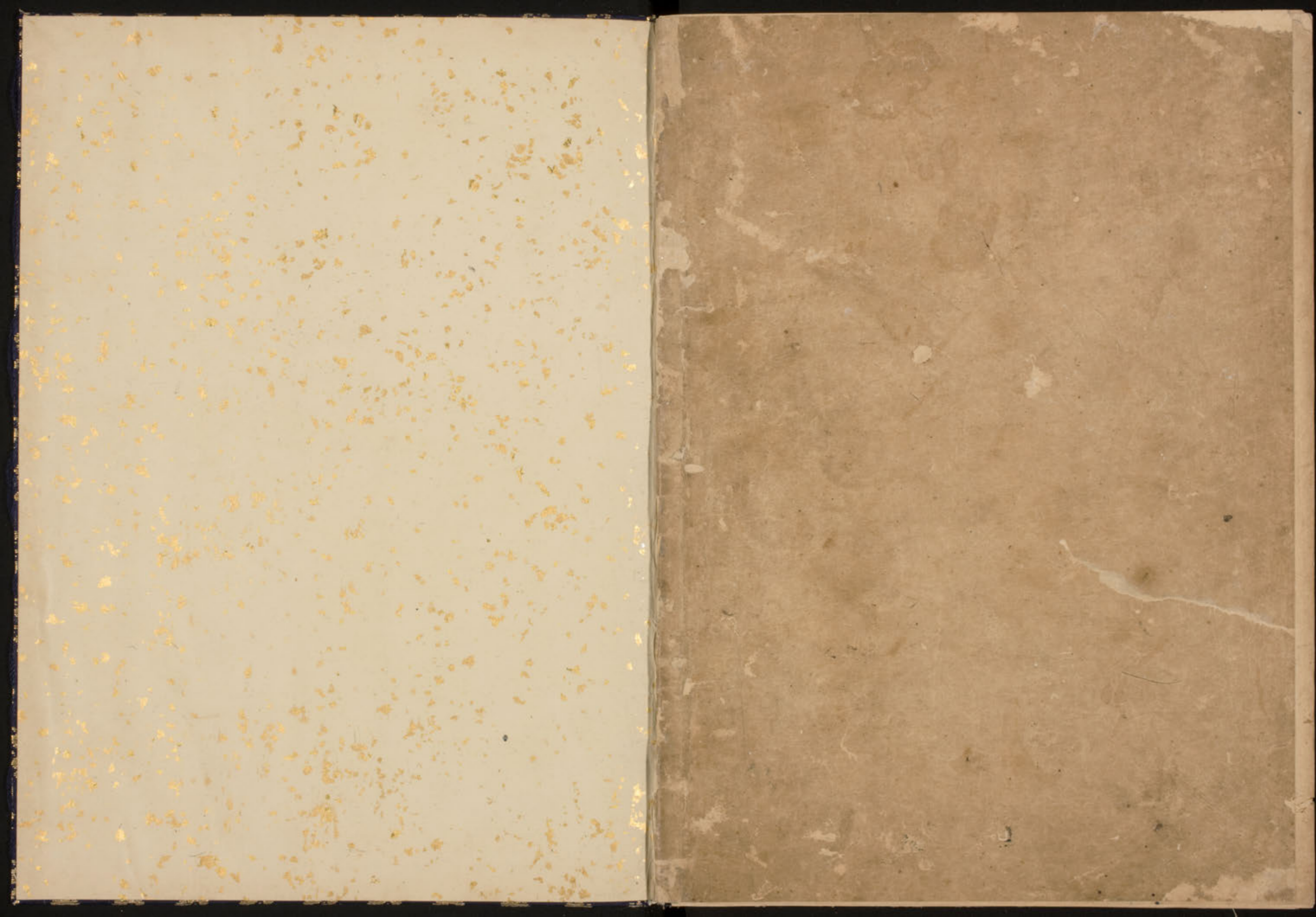
Handwritten text in cursive script, appearing as a separate line or section.

Handwritten text in cursive script, appearing as a separate line or section.

Handwritten text in cursive script, consisting of multiple lines of text.

Handwritten text in a cursive script, likely a list or account, written on aged, stained paper. The text is arranged in several lines, with some characters appearing to be numbers or specific symbols. The script is dense and difficult to decipher without a key.

11
2
3
4
5
6
7
8
9
10
11
12
13
14
15
16
17
18
19
20
21
22
23
24
25
26
27
28
29
30
31
32
33
34
35
36
37
38
39
40
41
42
43
44
45
46
47
48
49
50
51
52
53
54
55
56
57
58
59
60
61
62
63
64
65
66
67
68
69
70
71
72
73
74
75
76
77
78
79
80
81
82
83
84
85
86
87
88
89
90
91
92
93
94
95
96
97
98
99
100



鳥丸大納言光廣卿

古筆了了仲正筆書

鳥丸大納言光廣卿一筆
一むうか子國

鳥丸大納言

光廣卿

古筆了了仲正筆書

鳥丸大納言

光廣卿

