

長討角家

まろちち将乃印料付清東三原
野印ありまきい後おは乃
一原乃いりあひは日まき強乃の
あいのまき野印ありまきい
もき印料のこも日印将取まよ
まき指取よまきいあひあひ
だまああま乃作らまのまき
新まきあまあまあ印馬取ま
まああまああまあまあま
まああまああまあまあま
あまあまああまあまあま
あまあまああまあまあま
あまあまああまあまあま



料乃龍と志をたてて中をたて
くすしと命あつてなきておきかた
まこととちかきわぬ一人せ
念願しき十石有るはくせに
今とのしきとくはくせに
すしとちかきわぬ一人せ
乃矢るまては先ずとくせに
とあつてはくせに
くすしと命あつてなきておきかた
まこととちかきわぬ一人せ
念願しき十石有るはくせに
今とのしきとくはくせに
すしとちかきわぬ一人せ

海に舟とて東西にまはるる
尾波(しん)とてまはるる
くすしと命あつてなきておきかた
まこととちかきわぬ一人せ
念願しき十石有るはくせに
今とのしきとくはくせに
すしとちかきわぬ一人せ
乃矢るまては先ずとくせに
とあつてはくせに
くすしと命あつてなきておきかた
まこととちかきわぬ一人せ
念願しき十石有るはくせに
今とのしきとくはくせに
すしとちかきわぬ一人せ

Handwritten text in a cursive script, likely a historical document or manuscript. The text is written in a dark ink on aged, slightly yellowed paper. It consists of approximately 15 lines of text, starting with a large initial letter 'S' on the left side. The script is dense and characteristic of early modern European handwriting.

Handwritten text in a cursive script, likely a historical document or manuscript. The text is written in a dark ink on aged, slightly yellowed paper. It consists of approximately 15 lines of text, starting with a large initial letter 'S' on the left side. The script is dense and characteristic of early modern European handwriting.

ダイテグイニ

Handwritten text in a cursive script, likely a historical document or manuscript. The text is written in a dark ink on aged, yellowed paper. It consists of approximately 15 lines of text, with some lines starting with a small decorative flourish. The script is highly stylized and difficult to decipher without a key.

Handwritten text in a cursive script, likely a historical document or manuscript. The text is written in a dark ink on aged, yellowed paper. It consists of approximately 15 lines of text, with some lines starting with a small decorative flourish. The script is highly stylized and difficult to decipher without a key.

伊賀の事はしるしを尋ねて
乃國の事定評の事なり
の事しるしは人名はた
たふたふたうきくは伊田の事
きく推任惟まき初末の事
了りてしるしはしるしは母は
乃あはれ田の事なり
まきしるしはしるしはしるし
論揚國長末の事評の事なり
乃下まき越前の國の事
乃下まき越前の國の事
乃下まき越前の國の事
乃下まき越前の國の事

伊賀の事はしるしを尋ねて
乃國の事定評の事なり
の事しるしは人名はた
たふたふたうきくは伊田の事
きく推任惟まき初末の事
了りてしるしはしるしは母は
乃あはれ田の事なり
まきしるしはしるしはしるし
論揚國長末の事評の事なり
乃下まき越前の國の事
乃下まき越前の國の事
乃下まき越前の國の事
乃下まき越前の國の事

あつちあつちとていふは

あつちあつちとていふは

あつちあつちとていふは

あつちあつちとていふは

あつちあつちとていふは

あつちあつちとていふは

あつちあつちとていふは

あつちあつちとていふは

あつちあつちとていふは

あつちあつちとていふは

あつちあつちとていふは

あつちあつちとていふは

あつちあつちとていふは

あつちあつちとていふは

あつちあつちとていふは

あつちあつちとていふは

あつちあつちとていふは

あつちあつちとていふは

あつちあつちとていふは

あつちあつちとていふは

あつちあつちとていふは

あつちあつちとていふは

あつちあつちとていふは

あつちあつちとていふは

あつちあつちとていふは

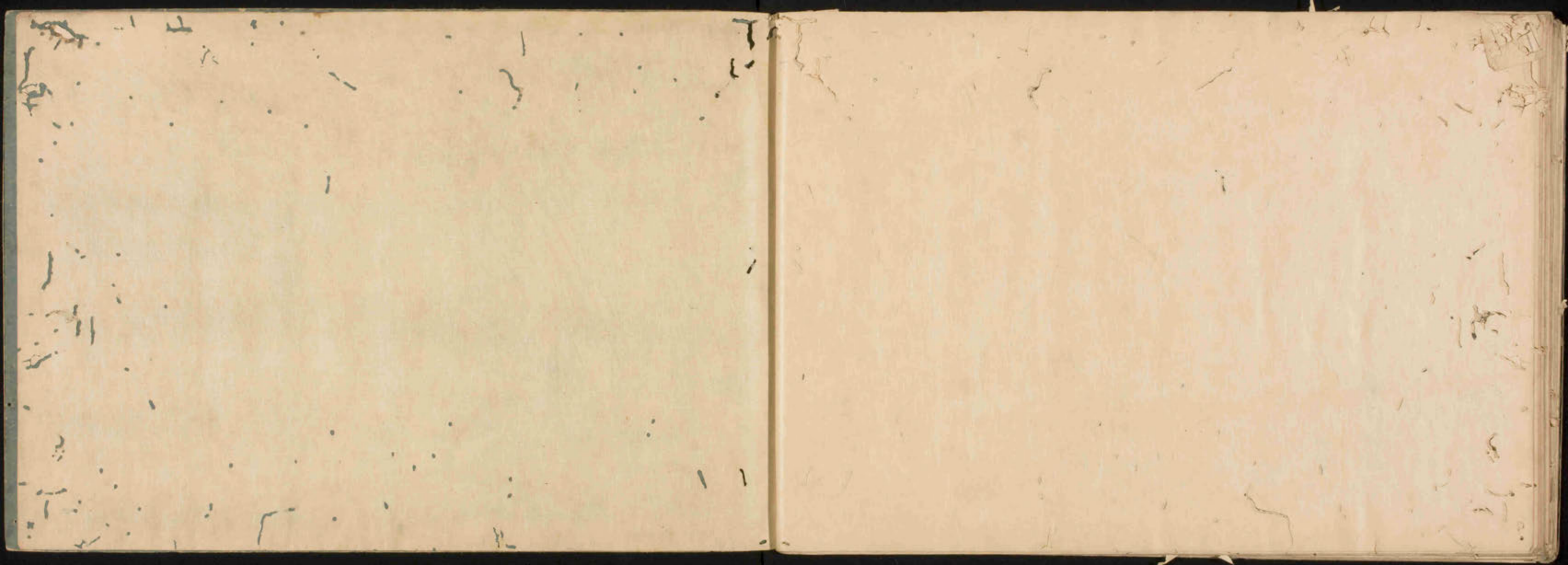
あつちあつちとていふは

Handwritten text in cursive script, likely a letter or document, written on aged paper. The text is dense and fills most of the page.

Handwritten text in cursive script, likely a letter or document, written on aged paper. The text is dense and fills most of the page.



[Faint, illegible handwritten text in a cursive script, possibly Chinese or Japanese, covering the right page of the manuscript.]





132X
28
36