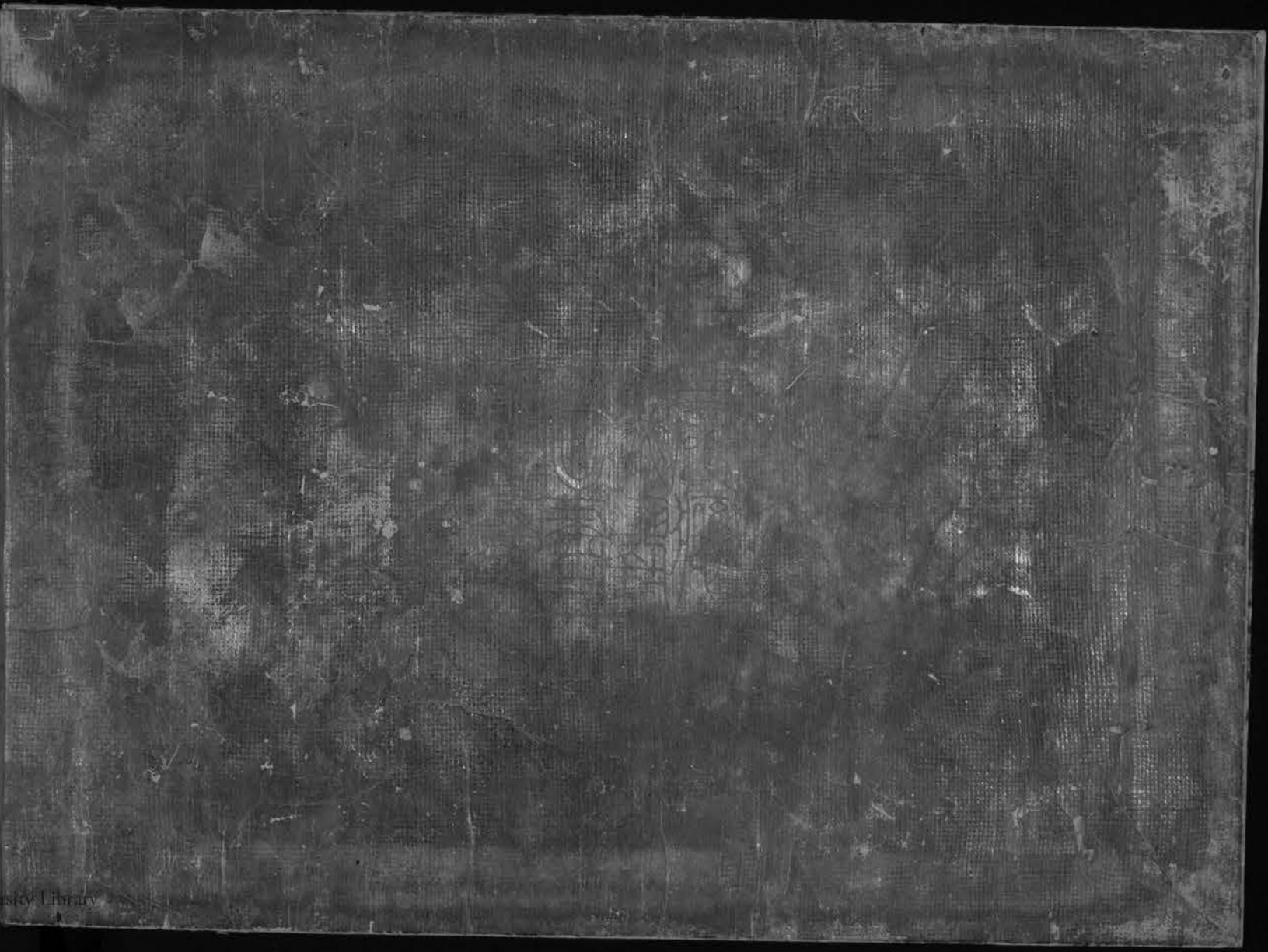




Handwritten text on a vertical title slip, likely in a cursive script.

Handwritten text in Arabic script, consisting of approximately 12 lines of cursive script. The text is written on aged, slightly stained paper. The script is dense and characteristic of classical Arabic calligraphy.



Handwritten text in a cursive script, likely a personal note or letter.

Handwritten text in a cursive script, likely a personal note or letter.

Handwritten text in a cursive script, likely a personal note or letter.

Handwritten text in a cursive script, likely a personal note or letter.

Handwritten text in a cursive script, likely a personal note or letter.

Handwritten text in a cursive script, likely a personal note or letter.

Handwritten text in a cursive script, likely a personal note or letter.

Handwritten text in a cursive script, likely a personal note or letter.

Handwritten text in a cursive script, likely a personal note or letter.

Handwritten text in a cursive script, likely a personal note or letter.

Handwritten text in a cursive script, likely a personal note or letter.

Handwritten text in a cursive script, likely a personal note or letter.

Handwritten text in a cursive script, likely a personal note or letter.

Handwritten text in a cursive script, likely a personal note or letter.

Handwritten text in a cursive script, likely a personal note or letter.

Handwritten text in a cursive script, likely a personal note or letter.

Handwritten flourish or signature element.

Handwritten flourish or signature element.

Handwritten flourish or signature element.

Handwritten flourish or signature element.

Handwritten flourish or signature element.

Handwritten text in a cursive script, likely a form of Japanese calligraphy (sōsho), arranged in vertical columns from right to left. The text is dense and fluid, characteristic of the style.



Handwritten text in Arabic script, consisting of approximately 14 lines of dense, cursive writing.

Handwritten text in Arabic script, consisting of approximately 14 lines of dense, cursive writing.

Handwritten text in a cursive script, likely a historical document or manuscript. The text is written in a fluid, connected style across approximately 15 lines.

Handwritten text in a cursive script, likely a historical document or manuscript. The text is written in a fluid, connected style across approximately 15 lines.

Handwritten text in a cursive script, likely a form of shorthand or a specific dialect. The text is arranged in approximately 14 horizontal lines across the page.

Handwritten text in a cursive script, continuing from the previous page. The text is arranged in approximately 14 horizontal lines across the page.

Handwritten text in a cursive script, likely Arabic or Persian, consisting of approximately 14 lines of text.

Handwritten text in a cursive script, likely Arabic or Persian, consisting of approximately 14 lines of text.

Handwritten text in Arabic script, consisting of approximately 14 lines of dense cursive writing.

Handwritten text in Arabic script, consisting of approximately 14 lines of dense cursive writing.



Handwritten Japanese text in cursive (sōsho) style, consisting of several vertical columns of characters.

Handwritten text in Arabic script, consisting of approximately 14 lines of dense, cursive writing.

Handwritten text in Arabic script, consisting of approximately 14 lines of dense, cursive writing.

Handwritten text in a cursive script, likely a historical document or manuscript, written on the left page of an open book. The text is arranged in approximately 15 horizontal lines, flowing from right to left across the page.

Handwritten text in a cursive script, likely a historical document or manuscript, written on the right page of an open book. The text is arranged in approximately 15 horizontal lines, flowing from right to left across the page.

Handwritten text in cursive script, likely a list or account, written vertically on the left page. The text is dense and fills most of the page area.

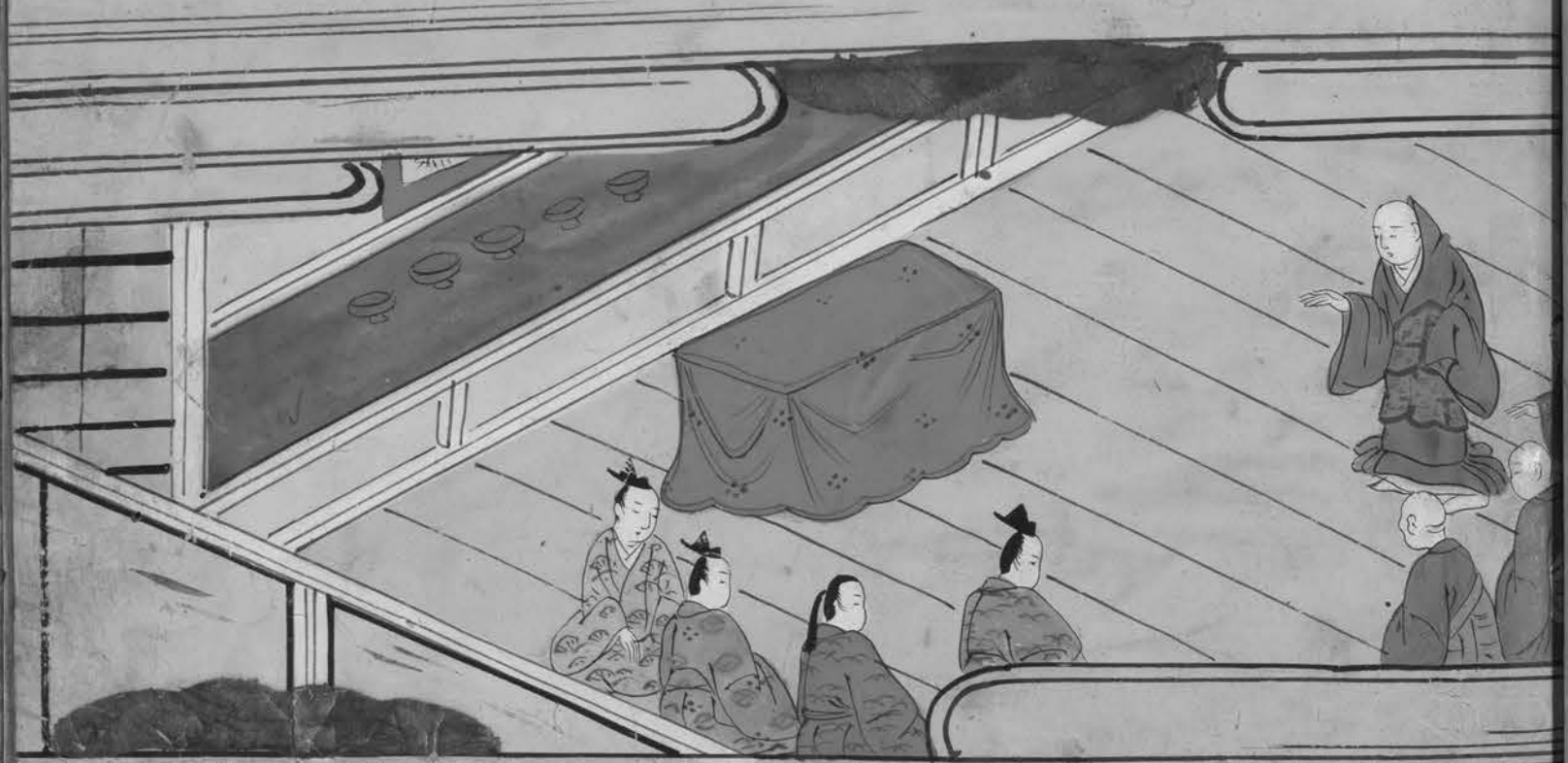
Handwritten text in cursive script, likely a list or account, written vertically on the right page. The text is dense and fills most of the page area.

Handwritten text in a cursive script, likely a form of Arabic or Persian calligraphy, consisting of approximately 14 lines of text.

Handwritten text in a cursive script, likely a form of Arabic or Persian calligraphy, consisting of approximately 14 lines of text.

Handwritten text in Arabic script, consisting of approximately 15 lines of cursive script.

Handwritten text in Arabic script, consisting of approximately 15 lines of cursive script.



しんぎんがくわんせうりつせう
ていめいせうりつせうりつせう
しんぎんがくわんせうりつせう
しんぎんがくわんせうりつせう
しんぎんがくわんせうりつせう
しんぎんがくわんせうりつせう
しんぎんがくわんせうりつせう
しんぎんがくわんせうりつせう
しんぎんがくわんせうりつせう
しんぎんがくわんせうりつせう

しんぎん
ていめい
しんぎん
ていめい

Handwritten text in a cursive script, likely a form of shorthand or a specific dialect. The text is arranged in approximately 15 horizontal lines across the page.

Handwritten text in a cursive script, likely a form of shorthand or a specific dialect. The text is arranged in approximately 15 horizontal lines across the page.

Handwritten text in Arabic script, consisting of approximately 15 lines of cursive script.

Handwritten text in Arabic script, consisting of approximately 15 lines of cursive script.

Handwritten cursive text, possibly a signature or name.

Handwritten character, possibly a numeral '4'.

Handwritten cursive text.

Handwritten cursive text.

Handwritten cursive text, appearing to be a list or series of entries.

Handwritten cursive text, appearing to be a list or series of entries.

Handwritten text in a cursive style, likely a form of Japanese calligraphy (sōsho). The text is arranged in approximately 12 vertical columns, reading from right to left. The characters are fluid and interconnected, characteristic of the cursive style.



Handwritten text in Arabic script, consisting of approximately 14 lines of dense, cursive writing.

Handwritten text in Arabic script, consisting of approximately 14 lines of dense, cursive writing.

+

!

u

1

大
正
十
年

書

Handwritten text in cursive script, likely a signature or a note, written vertically on the right page.



110X
302
2